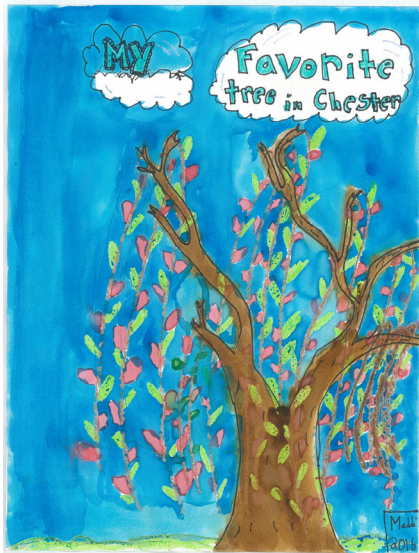


## Past Arbor Day Poster Contest Winners



## Join us in the celebration of Arbor Day!

This Arbor Day Poster Contest is offered in an effort to enhance public awareness of the importance of trees and tree care. You people often have an appreciation of the value of trees. We are askingtme to share that with us in honor of Arbor Day.

### Right Tree, Right Place

When planting a tree, the right tree should be selected based on the location and why the tree is to be planted. Plenty of space should be provided so the tree can grow to its natural, full mature height. Whether the tree is planted for fruit, shade, screening or beauty, there are many species and varieties available that are suitable for your location. Visit our site for links to additional information on tree planting and selection. [www.CTPA.org/educational-links](http://www.CTPA.org/educational-links).

### WHAT IS THE CTPA?

The Connecticut Tree Protective Association, established in 1922, is the oldest organization in America dedicated to the care and preservation of trees. The mission of CTPA is to educate citizens about the importance of trees and to assist arborists as they work on behalf of maintaining healthy trees. Arborists are tree care professionals who can help with the selection and care of trees and shrubs in residential, commercial and public landscapes.

[www.CTPA.org](http://www.CTPA.org)

# ARBOR DAY 5th Grade Poster Contest



*sponsored by  
the Connecticut Tree  
Protective Association*

Arbor Day  
April 26, 2024

## Dear 5th Grade Teacher:

The CTPA invites you and your students to participate in our 2024 Arbor Day Poster Contest. The students who submit the winning entries will be invited to attend a tree planting ceremony.

Have each student in your fifth grade class create a poster on the topic of:

“My Favorite Tree in My Town”

When submitting your entries, please include:

- \* The Name of the Teacher
- \* The Name and Address of the School
- \* The School’s County
- \* The Names of the Students

Forward the selected poems to: CTPA  
PO Box 1946  
Wallingford, CT 06492

Posters must be received by **Friday, March 8, 2024** to be considered.

Entries will be reviewed by the Arbor Day Committee of the CTPA and a winning poster will be selected from each of Connecticut’s eight counties.

For more information, please call [203-484-2512](tel:203-484-2512) or visit [www.CTPA.org](http://www.CTPA.org)



## THE TREE PLANTING CEREMONY

On Arbor Day, Friday, April 26th, 2024, CTPA will host a tree planting ceremony at Beardsley Zoo. All students who have submitted a winning entry, their families, classmates and teachers will be invited to join with CTPA at the tree planting ceremony and a VIP zoo experience.

## THE IMPORTANCE OF TREES AND TREE CARE

Trees provide a multitude of benefits to the citizens of Connecticut. The trees in our forests and woodlands are valuable natural resources that produce oxygen, filter air pollution, hold soil from eroding, and give food and cover to wildlife. These trees also can be used to furnish fuel for our homes as well as to provide us with needed wood products.

In more suburban and urban situations, trees provide many of the same benefits. If properly located, trees can significantly reduce the cost of heating and cooling our buildings.

However, perhaps more important to each of us personally are the sensory, spiritual and emotional values trees offer. They are large living beings that provide us with a sense of stability in our lives and that touch us with their personality and strong, solid nature.

Although fairly self-sufficient, trees occasionally become diseased, grow old and decay, or experience damage due to storms or other types of environmental impacts. Sometimes they become too large or need to be removed for other reasons. When a tree is in trouble, an arborist is the person to call for advice and tree care services.

In order to practice arboriculture in Connecticut, arborists must be licensed by the State. They must keep up to date on issues such as tree biology, insects and diseases and the latest advances in tree care, for the benefit of the trees in the landscape and, indeed, all of us.

## OUR ENVIRONMENTAL HERITAGE

It has been said that a person should put back into this world as much as he or she takes out of it. Estimates suggest that, over the course of a lifetime, the average American will use the wood produced by some 200 mature trees.

While it is not necessary that each person plant that many trees, it would be a noble commitment for each of us to take on the care and maintenance of those trees we see, touch and get to know as we go about our daily lives.

