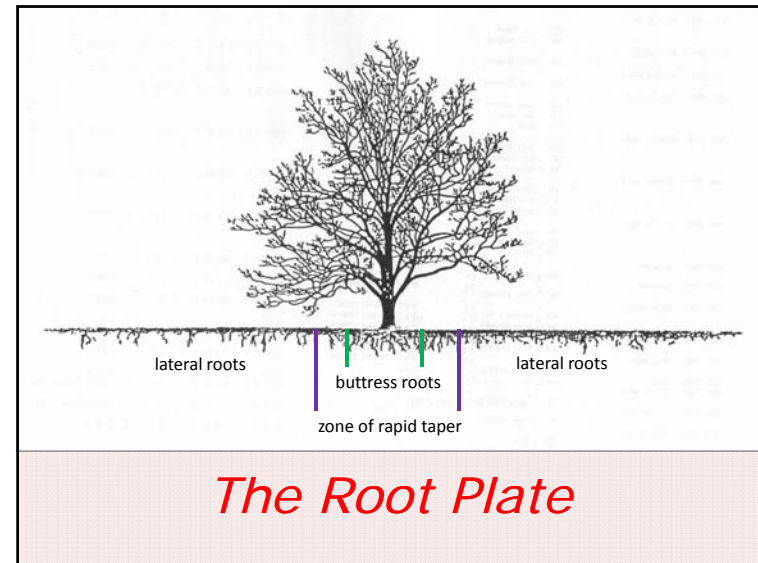
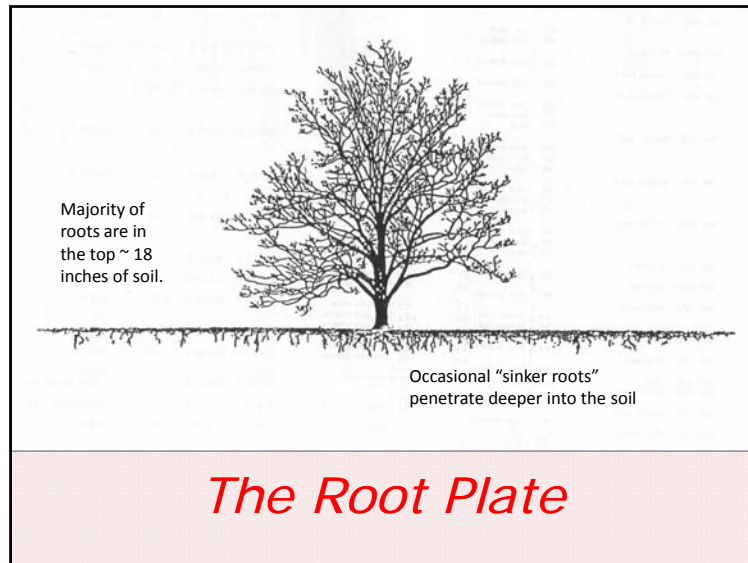
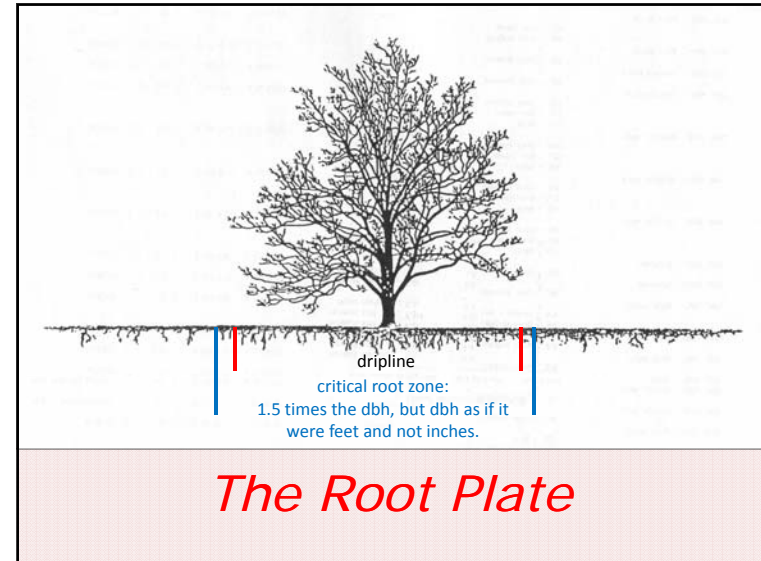


This photo by Alex Shigo shows a section of red oak that has been treated with iodine. The black specks that you see throughout the wood are starches – iodine turns starches black or dark blue.

This is another major function of wood – it helps store the food supply of the tree – starches and fats (oils). The ray cells aid with transportation within the living part of the wood.







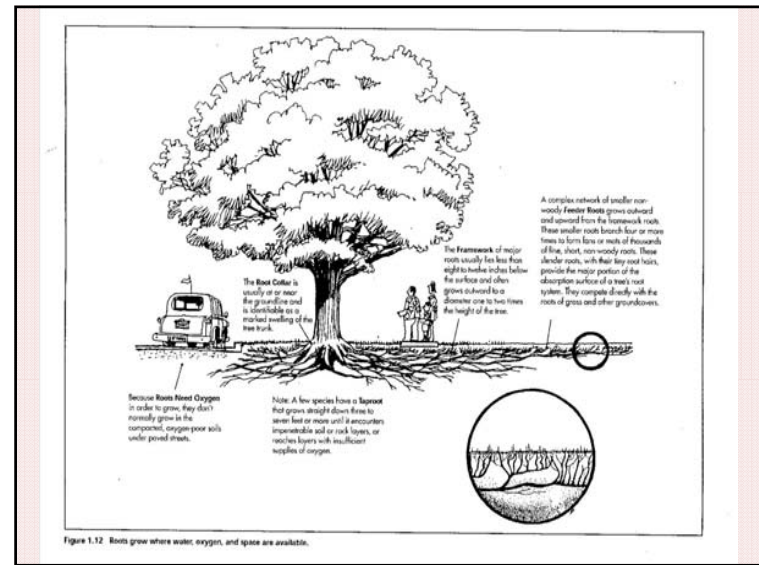
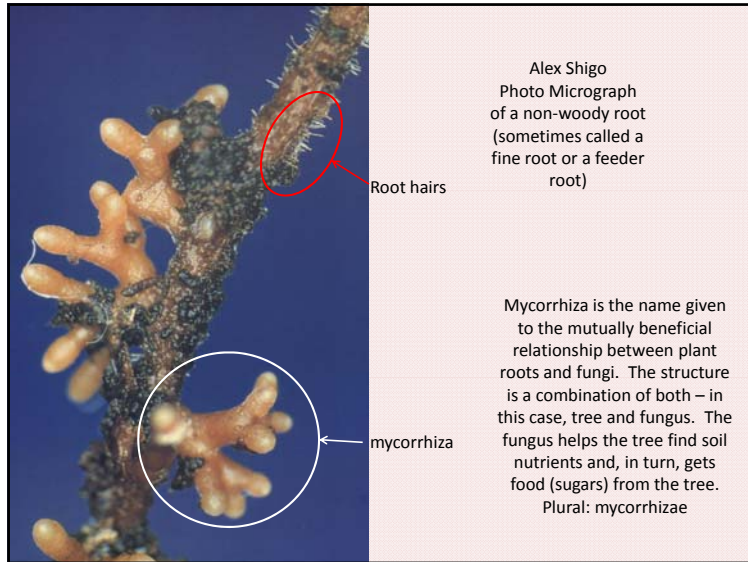


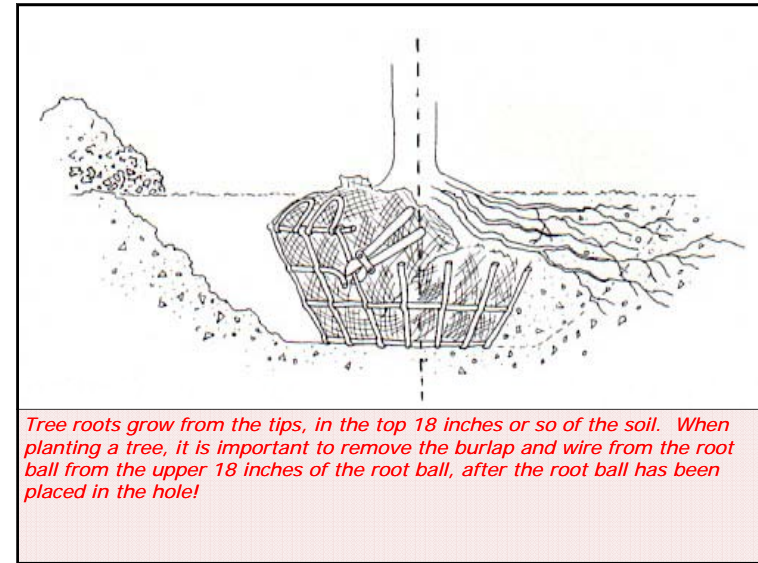
Figure 1.12 Roots grow where water, oxygen, and space are available.



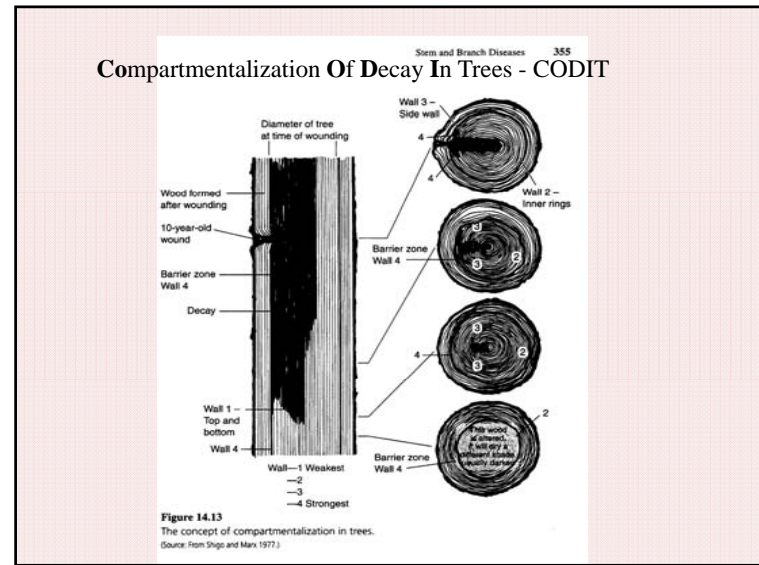
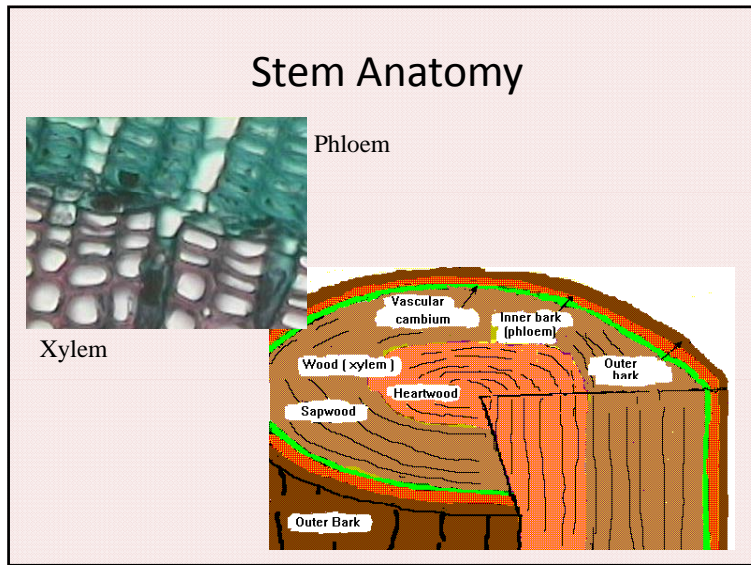
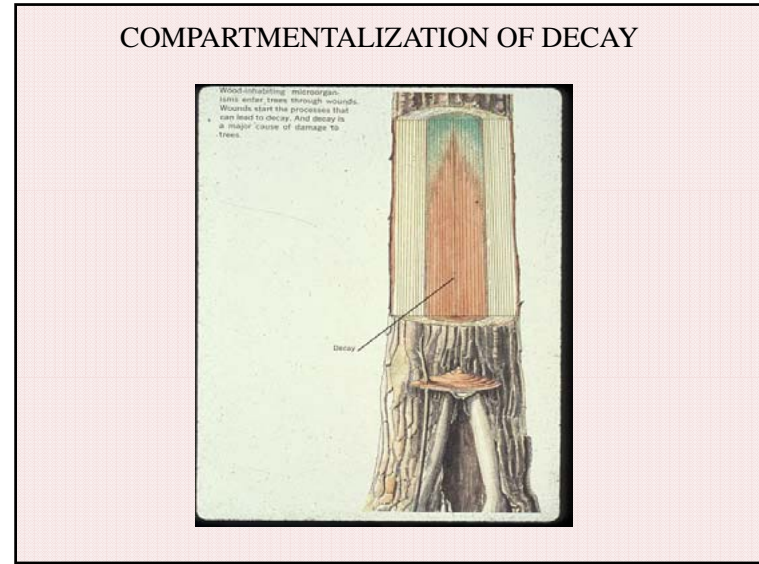
## Soil nutrients

Macro - nitrogen, phosphorus, potassium  
Minor – calcium, iron, sulfur, magnesium  
Trace minerals

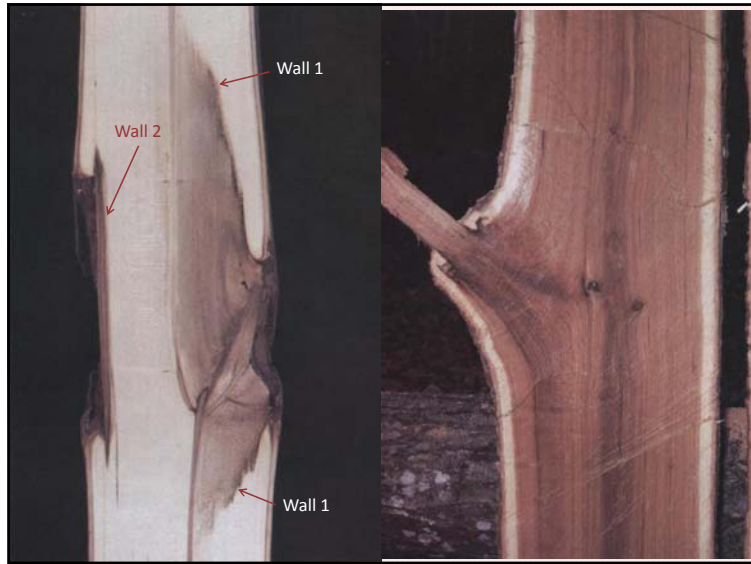
C HOPKN'S CaFe MnMg B CuZn Mo

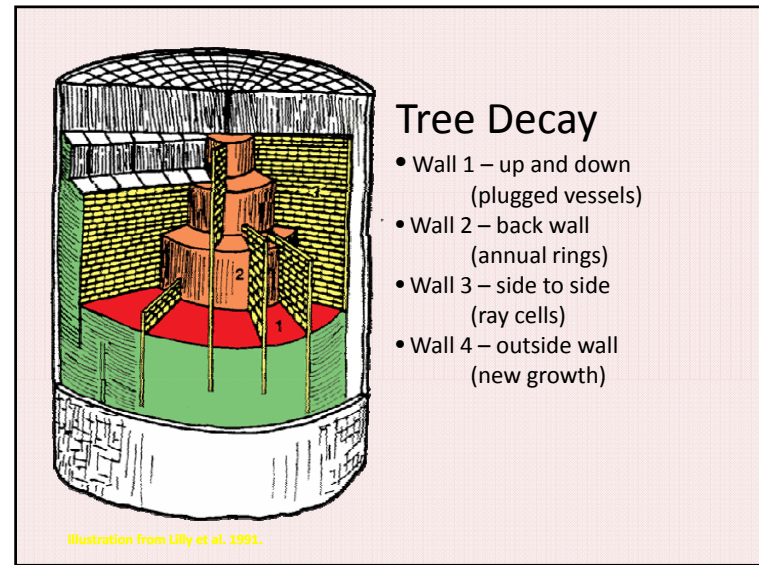
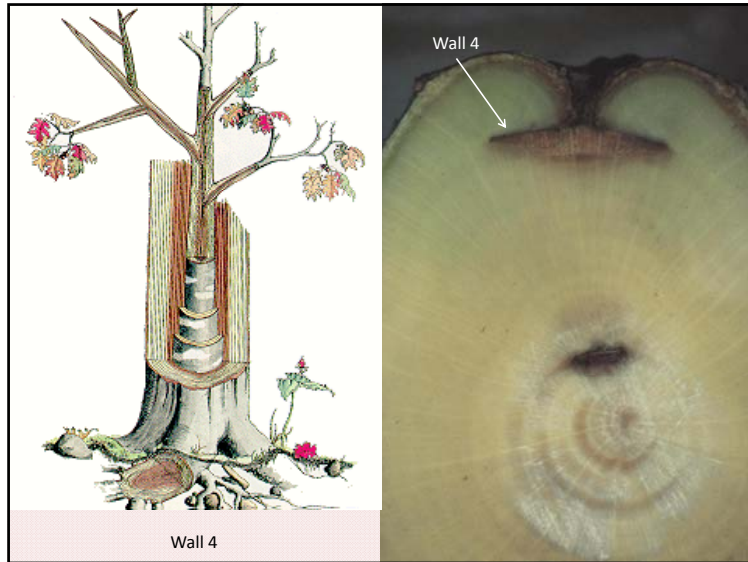












Trees will respond to wounds differently depending upon size and type of wound, vigor and health of the tree, species and genetics of the individual tree.



*May you find your  
own pot of gold in  
arboriculture!  
Questions?*